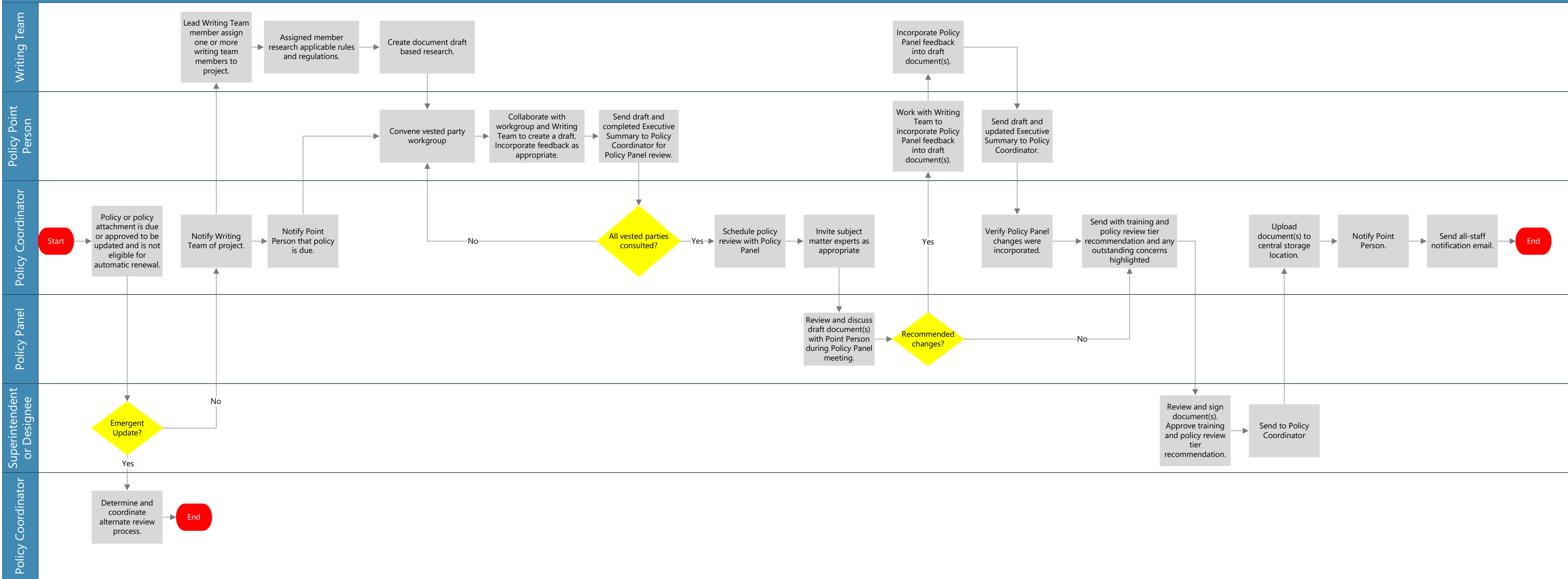


Regular Policy and Policy Attachment Reviews (Not Applicable to Administrative Corrections)



Notes

- Begin with the Initial Screening and Automatic Renewal process for initial screening prior to starting a regular review.
- Policies and policy attachments cannot be in violation of OSH policies, laws, regulations, The Joint Commission standards, etc.
- A procedure is just one example of a policy attachment. Procedures are a high-level, descriptive overview of how OSH will implement policy. Procedures may assign tasks to multiple departments.